

あわら市の子ども達は？

(全国学力・学習状況調査の結果から)



児童生徒の「学力」を育てるのは、学校の教育力と家庭・地域の教育力がうまくかみ合っているに尽きます。両者が連携しながら組織的かつ継続的に取り組まなければ

【市平均正答率と全国・県との比較】

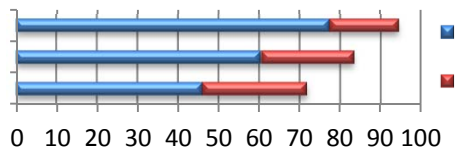
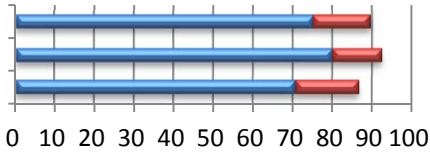
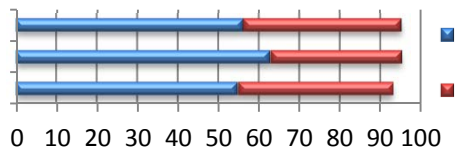
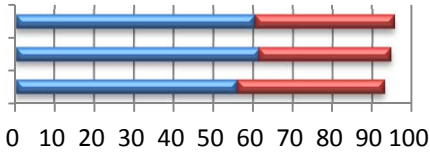
(3ポイント差を基準：◎ \geq 3, 3 $>$ ○ \geq 0, 0 $>$ △ $>$ -3, -3 \geq ▲)

小学校

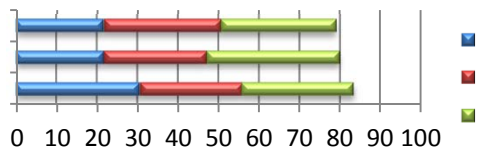
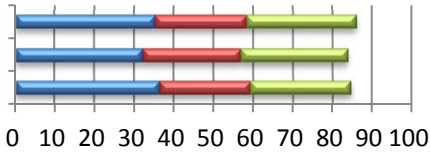
6年	全国平均との比較	県平均との比較
国語A	◎	○
国語B	◎	▲
算数A	◎	○
算数B	◎	△
理科	◎	△

中学校

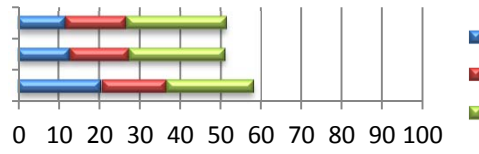
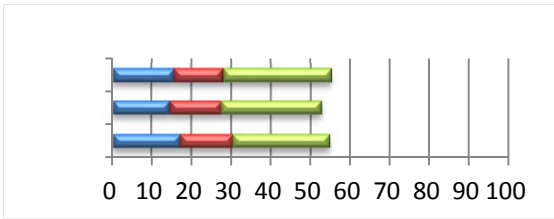
3年	全国平均との比較	県平均との比較
国語A	◎	○
国語B	◎	○
数学A	◎	△
数学B	◎	△
理科	◎	○



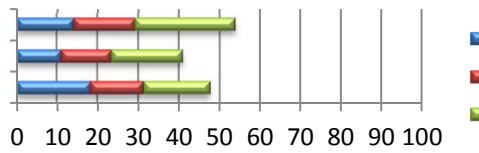
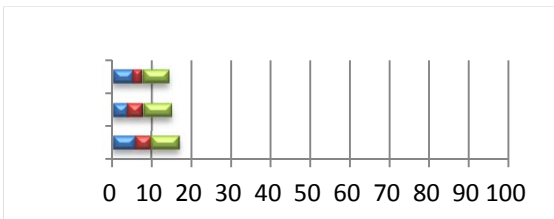
10



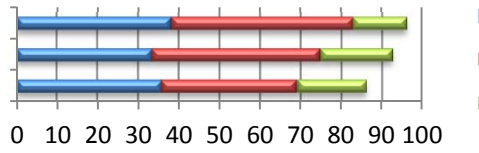
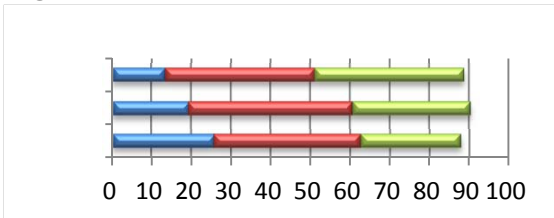
11



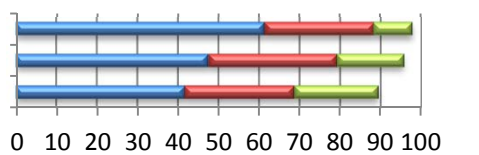
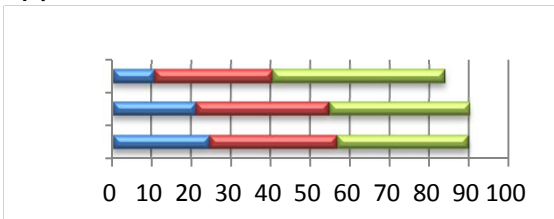
12



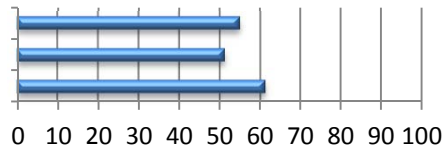
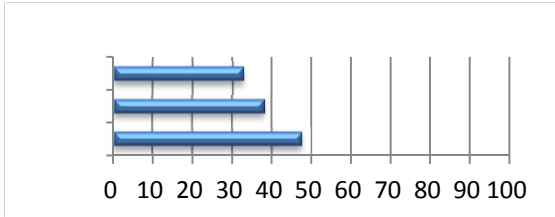
13



14

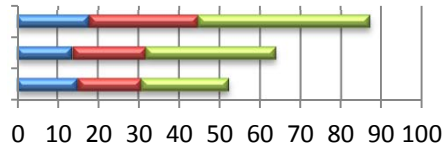
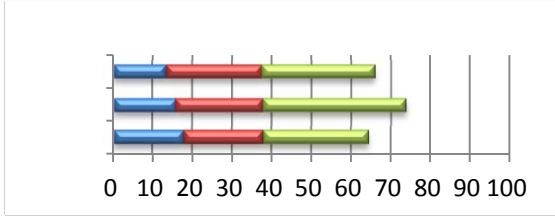


15



■

16

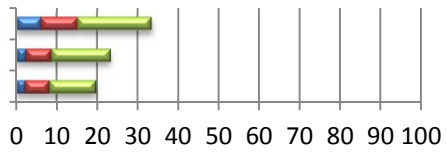
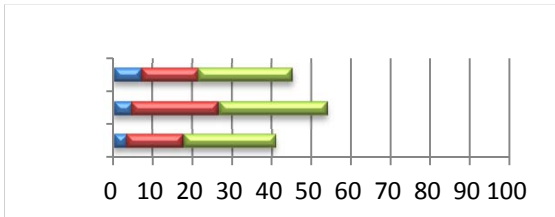


■

■

■

17

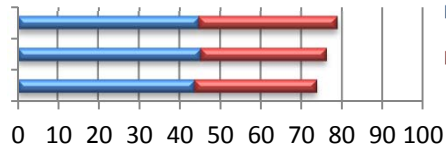
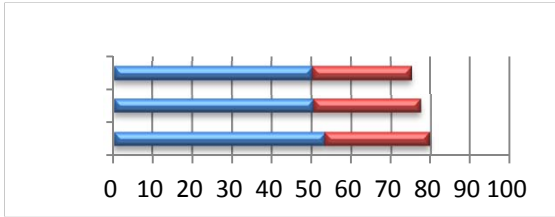


■

■

■

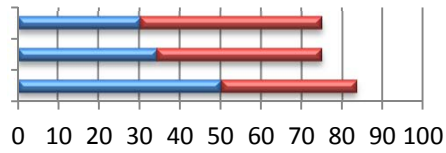
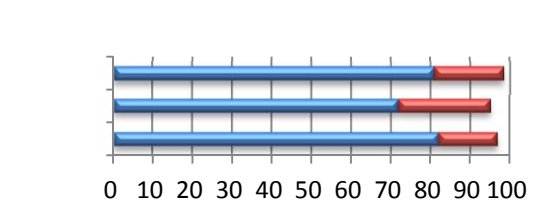
18



■

■

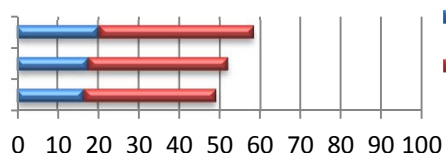
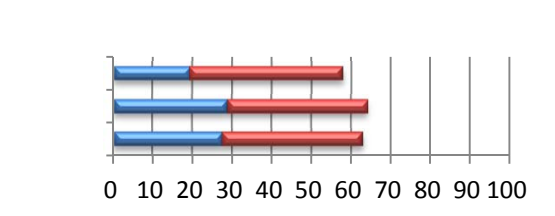
19



■

■

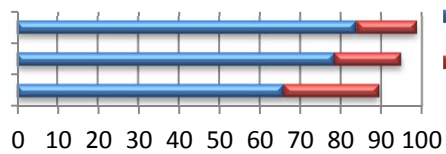
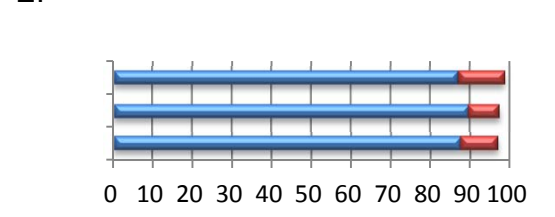
20



■

■

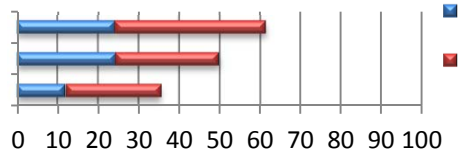
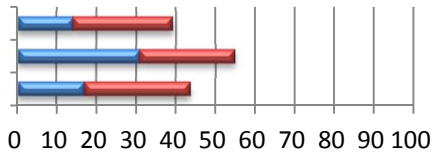
21



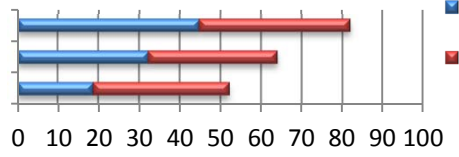
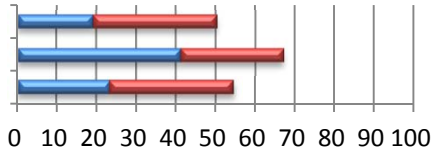
■

■

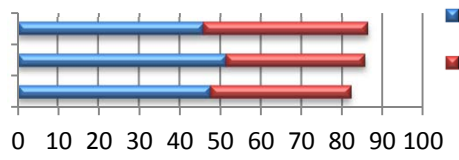
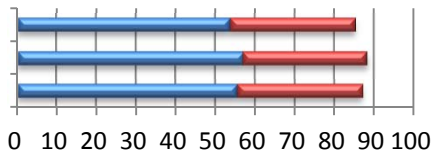
22



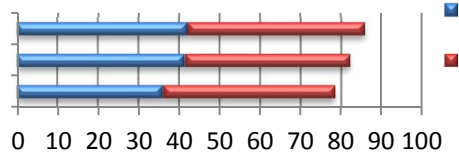
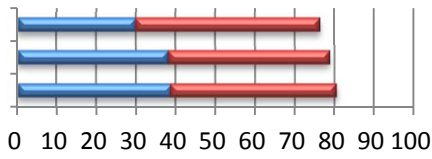
23)



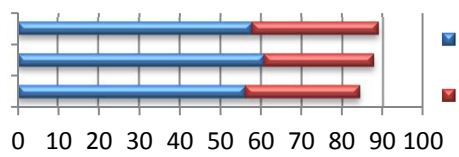
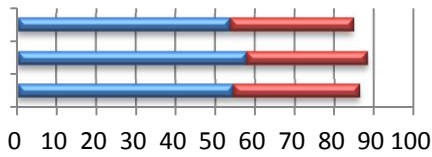
24



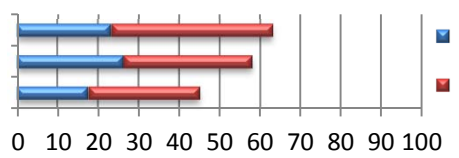
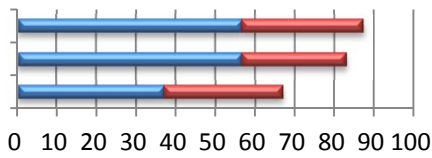
25



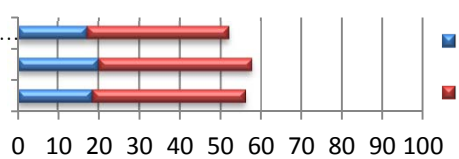
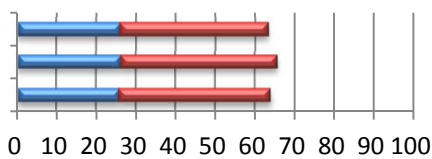
26



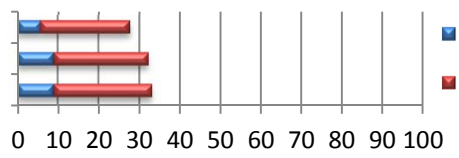
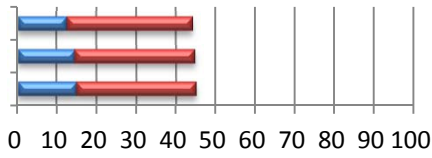
27



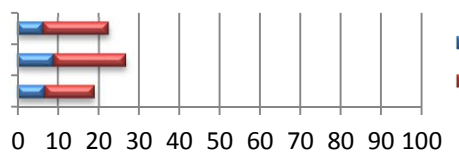
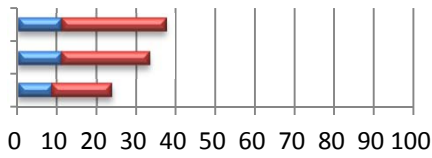
28



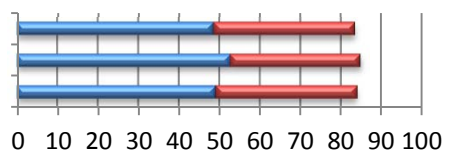
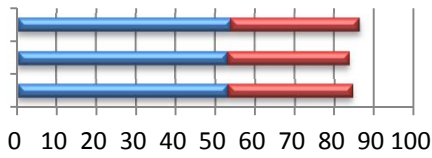
29



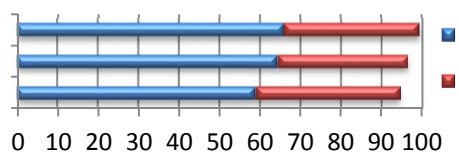
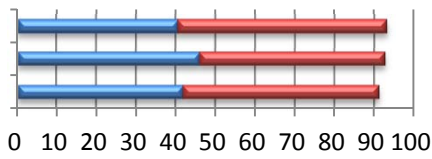
30



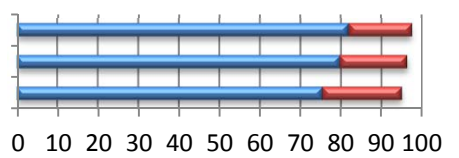
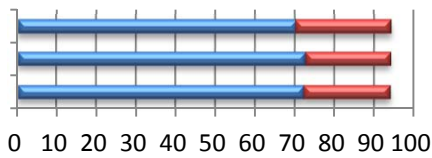
31



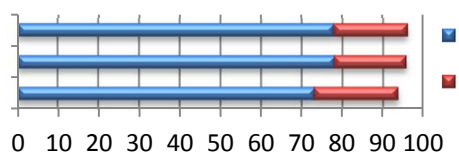
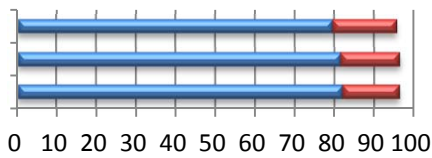
32



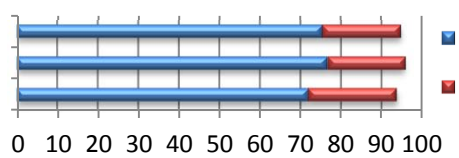
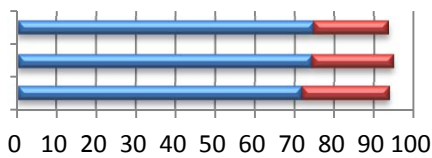
33



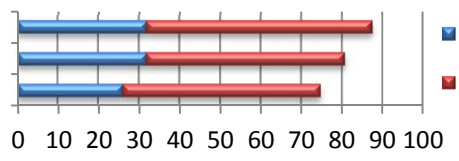
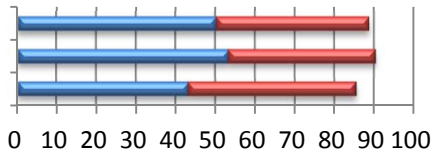
34



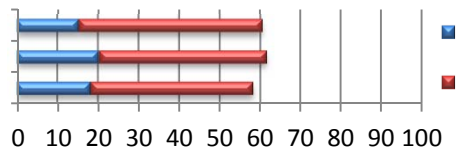
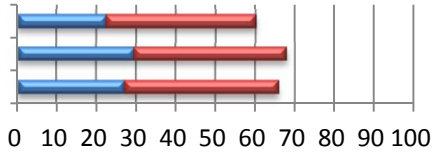
35



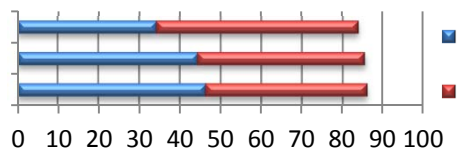
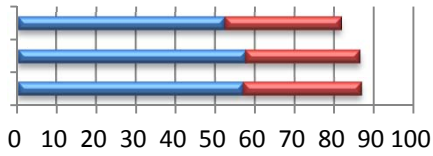
36



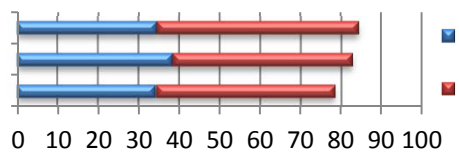
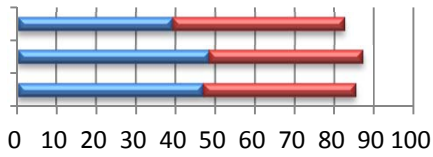
37



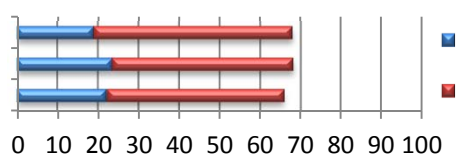
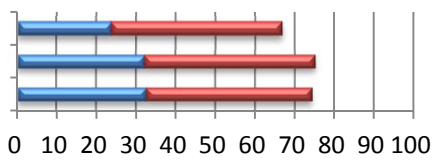
38



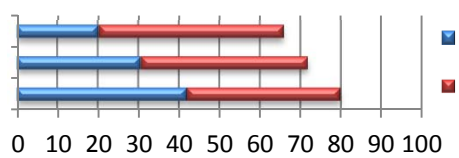
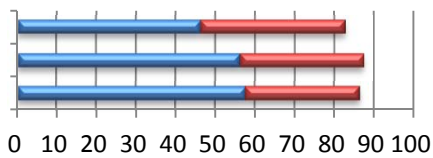
39



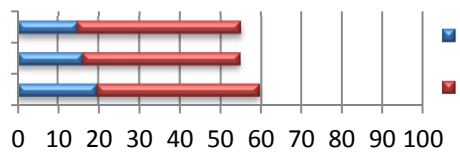
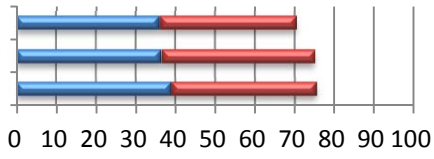
40



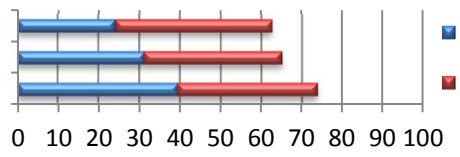
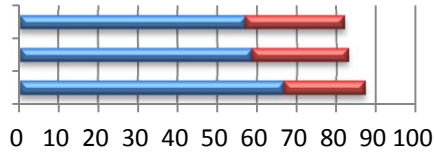
41



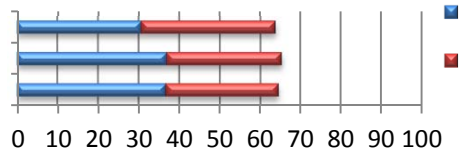
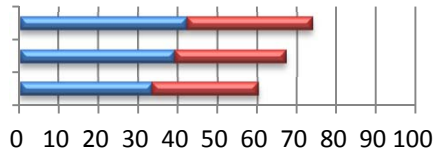
42



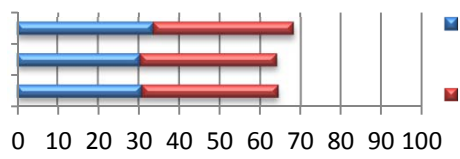
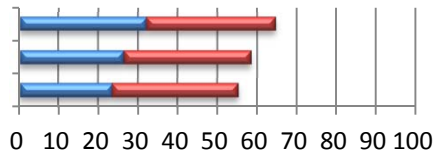
43



44



45



46

