

# Awara City Takeda River version

## Flood Hazard Map

**Expected maximum scale version**  
Heavy rainfall that occurs once in about 1,000 years

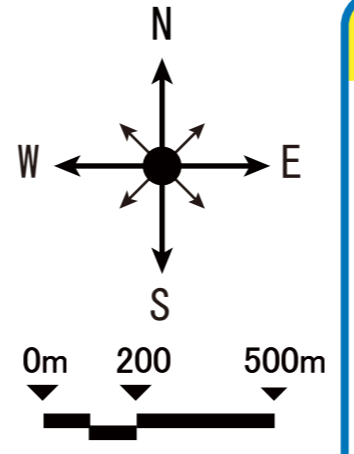
**Please pay attention!**

This map (Takeda Riv. version) displays predicted flood damage (predicted maximum scale version) when six rivers on the right table inundate and overflow or destroy riverbanks. Please check nearby shelters for emergencies.

Depending on the degree of rainfall, flood can happen even in the area with no specific color indicating flooding. So, please evacuate immediately when you feel danger.

Names of the rivers expected to cause flood damage in Awara City	Expected maximum scale	Total amount of rainfall
Kuzuryu River	540mm (in 2 days)	
Takeda River <sup>※1</sup>	690mm (in 1 day)	
Hyogo River	803mm (in 1 day)	
Kumasaoka River/Shimokanaya River	813mm (in 1 day)	
Gonze River	813mm (in 1 day)	
Miyadani River	689.7 mm (in 1 day)	

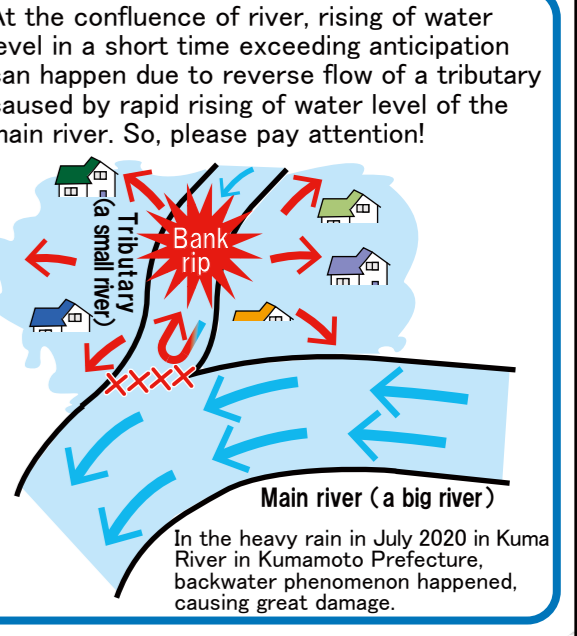
※1 Takeda River includes Tajima River and Takama River. from "Area map of expected flood and inundation of Kuzuryu River and Hino River in Kuzuryu River system" issued in June, 2016.



**List of facilities available for the people requiring consideration**

Facilities subject to the influence of hazard area of landslide disaster, etc.			Facilities subject to the influence of flooding		
No.	Names of facilities	Location	No.	Names of facilities	Location
1	Care heights Awara	18-11 Yokogaki	4	Hinata kobo Co.Ltd.	6-11-1 Ii
2	Kanazu children's club (Kanazu kodomo club) (inside Kanazu Elementary School)	1-20-1 Hananomori	6	Furumachi office of Hinata kobo Co.Ltd.	1-20-13 Ohmizo
3	Kanazu Elementary School	1-20-1 Hananomori	7	Clean Net Kanazu	9-5-1 Yachi
			8	Comfo Garden Kimura	3-24-8 Ichihime
			9	Nice Care Kimura	3-23-4 Ichihime
			10	Group home Awara Shotokuen	3-25-7 Tanakanaka
				Sakai District Medical Association Day Service Center	5-27 Touzenji
			11	Min-na no ie	3-4-32 Ohmizo
			12	Day Service Min-na no ie	2-29-17 Harumiya
			13	Kanazu Prefectural High School	4-5-1 Ichihime
			14	Kanazu Middle School	1-5-1 Ichihime
			15	Awara Elementary School	2-25 Tanakanaka
			16	Honjo Elementary School	7-1 Shimoban
			17	Ii Elementary School	13-24 Seima
			18	Shirafuji Child Care Center	1-13-17 Ichihime
			19	Myoerji Child Care Center	2-17-3 Ichihime
			20	Ichihime Child Care Center	3-8-1 Ichihime
			21	Ii Child Care Center	21-27-1 Seima
			22	Honjo Child Care Center	7-1 Shimoban
			23	Zenkuyji Child Care Center	3-23-2 Funatsu
			24	Awara Keiai Child Care Center	3-7-6 Tanakanaka

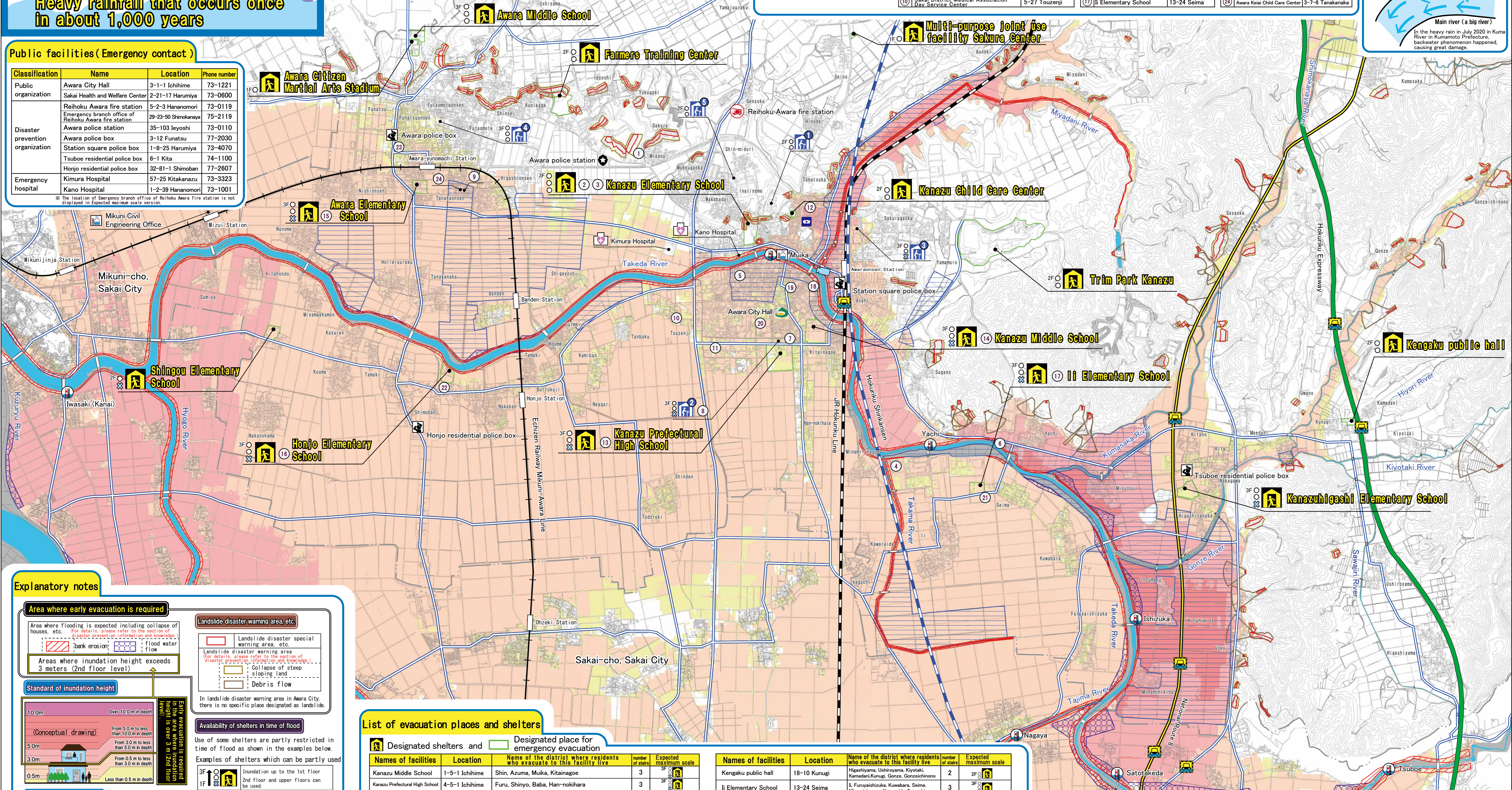
**Pay attention to the confluence of river!**



**Public facilities (Emergency contact)**

Classification	Name	Location	Phone number
Public organization	Awara City Hall	3-1-1 Ichihime	73-1221
	Sakai Health and Welfare Center	2-21-17 Harumiya	73-0600
Disaster prevention organization	Reihoku Awara fire station	5-2-3 Hananomori	73-0119
	Emergency branch office of Reihoku Awara fire station	29-23-50 Shimokanaya	75-2119
	Awara police station	35-103 Iyoshi	73-0110
	Awara police box	3-12 Funatsu	77-2030
Emergency hospital	Station square police box	1-8-25 Harumiya	73-4070
	Tsuboe residential police box	6-1 Kita	74-1100
	Honjo residential police box	32-81-1 Shimoban	77-2607
	Kimura Hospital	57-25 Kitakanazu	73-3323
	Kano Hospital	1-2-39 Hananomori	73-1001

※ The location of Emergency branch office of Reihoku Awara fire station is not displayed in Expected maximum scale version.



**Explanatory notes**

**Area where early evacuation is required**

Area where flooding is expected including collapse of houses, etc. (For details, please refer to the section of disaster prevention information and knowledge.)

Areas where inundation height exceeds 3 meters (2nd floor level)

**Standard of inundation height**

10.0m (Conceptual drawing): Over 10.0m in depth, From 5.0m to less than 10.0m in depth, From 3.0m to less than 5.0m in depth, From 0.5m to less than 3.0m in depth, Less than 0.5m in depth

**Availability of shelters in time of flood**

Use of some shelters are partly restricted in time of flood as shown in the examples below.

Examples of shelters which can be partly used

Examples of shelters we cannot use

**Inundation area in the past**

Inundation area in the past (For details, please refer to the section of disaster prevention information and knowledge.)

**List of evacuation places and shelters**

Names of facilities	Location	Name of the district where residents who evacuate to this facility live	number of stairs	Expected maximum scale
Kanazu Middle School	1-5-1 Ichihime	Shin, Azuma, Muika, Kitainagoe	3	3F
Kanazu Prefectural High School	4-5-1 Ichihime	Furu, Shinyo, Baba, Han-nokihara	3	3F
Kanazu Elementary School	1-20-1 Hananomori	Shintomi, Ten-no, Mizuguchi, Touka, Wakide, Ueyouka, Youka, Shimoyouka, Sakanchihiro, Inariyama, Senzoku, Mukougakka, Makabada, Shim-midori	3	3F
Kanazu Child Care Center	3-24-20 Harumiya	Kasuga, Chuou, Takatsuka	2	2F
Trim Park Kanazu	67-30-1 Yamamuro	Asahi, Sakuragaoka, Yachi, Sugano, Yamamuro	2	2F
Awara Elementary School	2-25 Tanakanaka	Tanakaonsen, Higashionsen, Nishionsen, Shigeyoshi, Banden, Tanakanaka, Horiejouraku, Nunome	3	3F
Awara Citizen Martial Arts Stadium	2-81 Funatsu	Funatsu, Matsukage	1	1F
Awara Middle School	2-75 Funatsu	Funatsuonsen, Futaomoteonsen	3	3F
Farmers Training Center	23-1 Kunikage	Futaomote, Ushiyama, Kunikage, Shinsei, Iyoshi, Yokogaki, Miyaou, Sakura	2	2F
Honjo Elementary School	7-1 Shimoban	Todoroki, Shinden, Touzenji, Tanbaku, Kamaban, Neagari, Buttokoji, Suimei, Koumei, Miaka, Nakaban, Shimoban, Tamaki	3	3F
Shingou Elementary School	1-1 Nakanohama	Koume, Kasuien, Miyamaekumon, Kitahondo, Sumiya, Nakanohama	2	2F
Kanazuhigashi Elementary School	18-10 Nakagawa	Nakagawa, Higashitanaka, Uryu, Minamihikida, Kitahikida, Jirouranru, Misunou, Kitano, Kita, Maedani, Sasaoka, Uwano	3	3F

**Welfare shelter**

No.	Names of facilities	Location	number of stairs	Expected maximum scale
1	Awara City Kanazu Hibiragaoka dormitory	3-28-21 Harumiya	2	2F
2	Nice Care Kimura	3-23-4 Ichihime	5	3F
3	Wellness Kimura	2-15-23 Jiyugaoka	6	3F
4	Yunomachi Melon-en	42-20 Futaomote	3	3F
5	Kanazu Sun Home	3-22-12 Hananomori	2	2F

**Water level and a picture of the river can be confirmed by the QR code, etc. below.**

Comprehensive information e-mail on rivers in Fukui Prefecture and countermeasures to prevent and reduce sediment disasters

Monitoring camera picture and water level of Kuzuryu River can be confirmed by this QR code.

Information of river water level

URL : <http://ame.pref.fukui.jp/>

URL : <https://k.river.go.jp/>